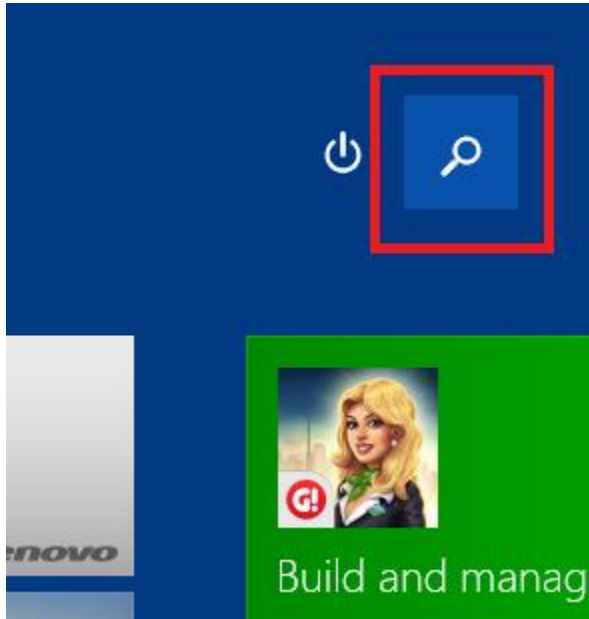
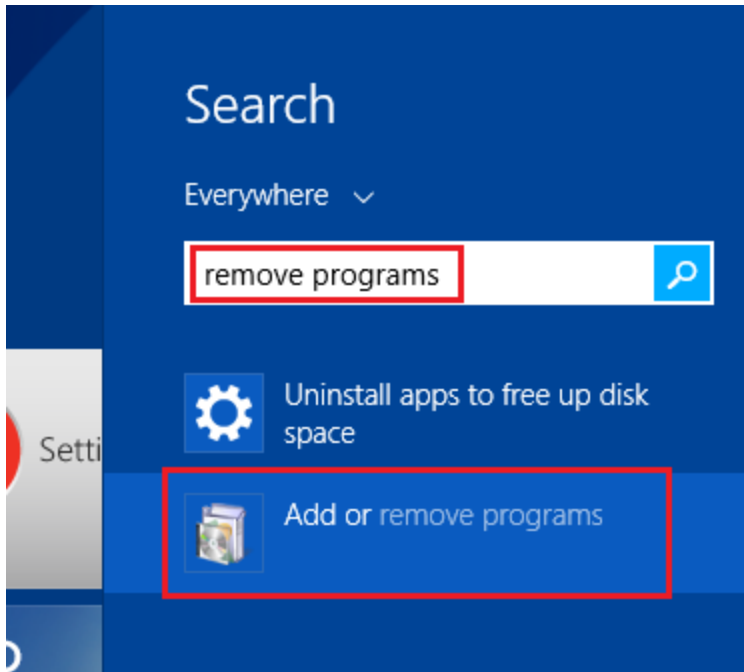


## Instructions to determine if you have the SuperFish application installed and how to Uninstall it

**Step 1.** Step 1: On **Windows 8.1**, Open Search



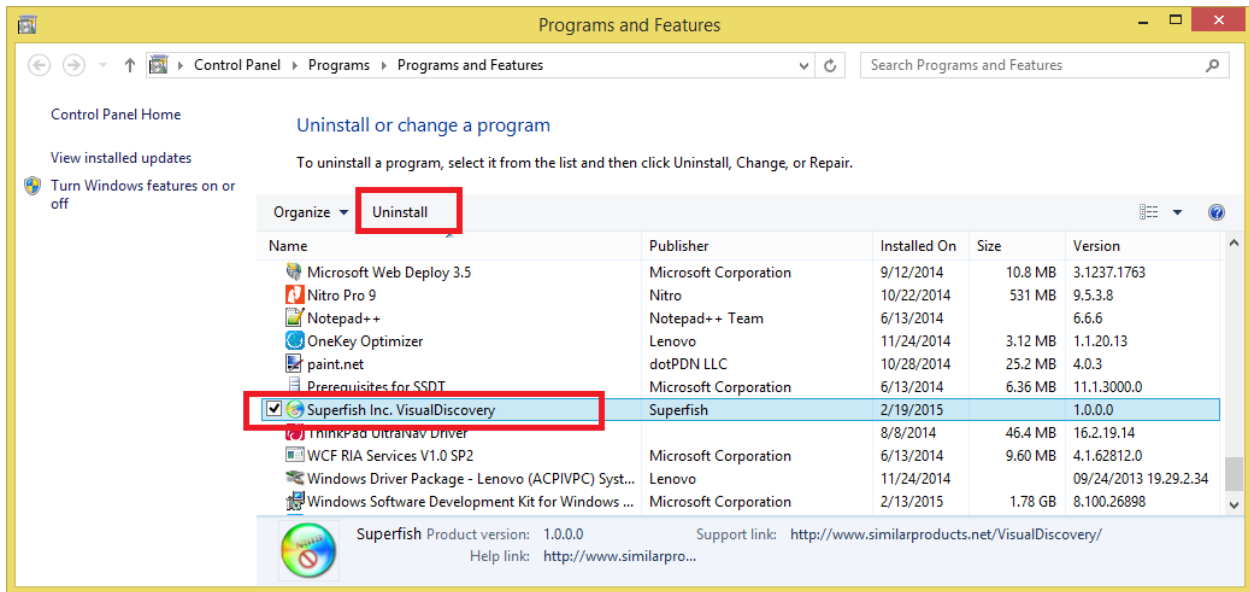
**Step 2:** Search for “**remove programs**” and select “**Add or remove programs**”



**Step 3.** In the list of installed items, locate “**Superfish Inc. Visual Discovery**”.

**Note:** If you do not find an item with the name “**Superfish Inc. VisualDiscovery**”, you do not have the application installed. **However**, you should still follow the next guide for “How to remove the SuperFish certificate”.

**Step 4:** Select “**Uninstall**”. The uninstall will take several seconds. When the uninstall completes, it will automatically be removed from the list of installed programs.

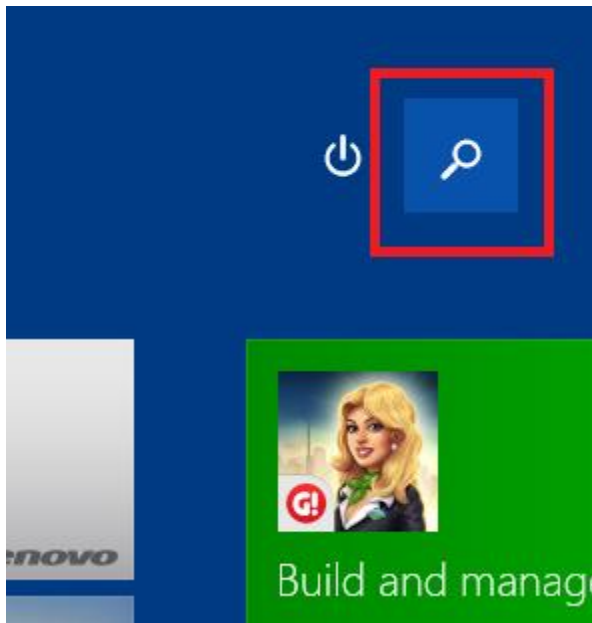


**Step 5:** After confirming the removal of the application, please follow the steps for “How to remove the SuperFish certificate”.

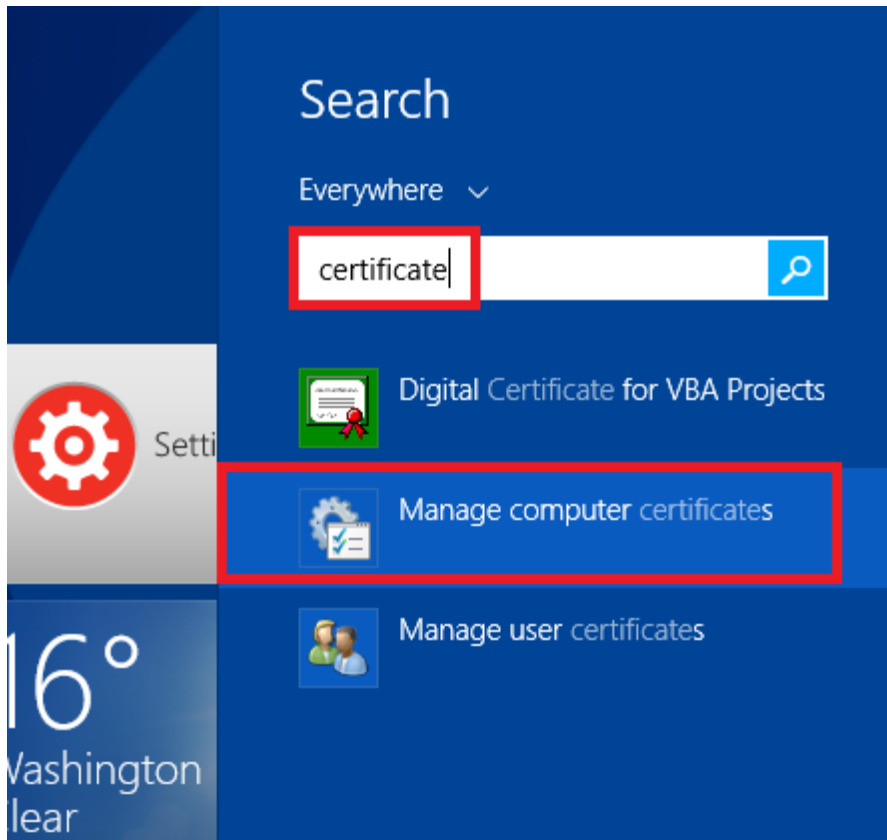
## Instructions to determine if you have the SuperFish Certificate installed and how to remove it.

After uninstalling the SuperFish application, the certificate may still remain. It is very important to delete the certificate even though the application itself has been removed.

**Step 1:** On **Windows 8.1**, Open Search



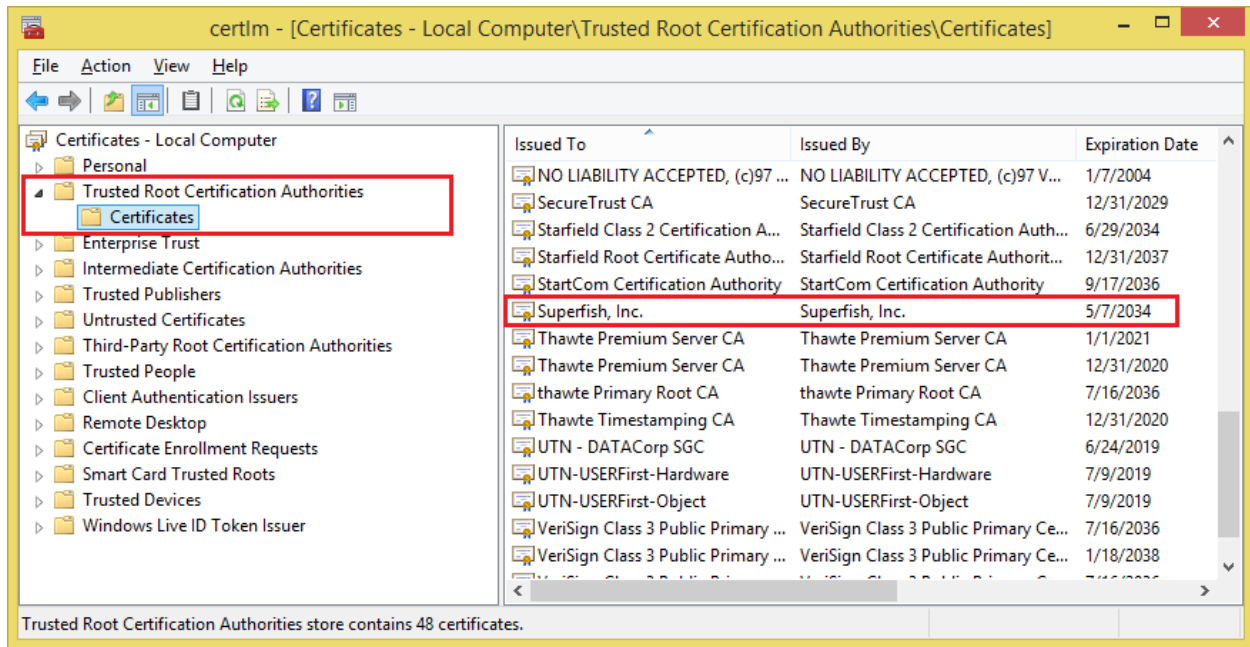
**Step 2:** Search for “Certificate”. Select “Manage computer certificates”.



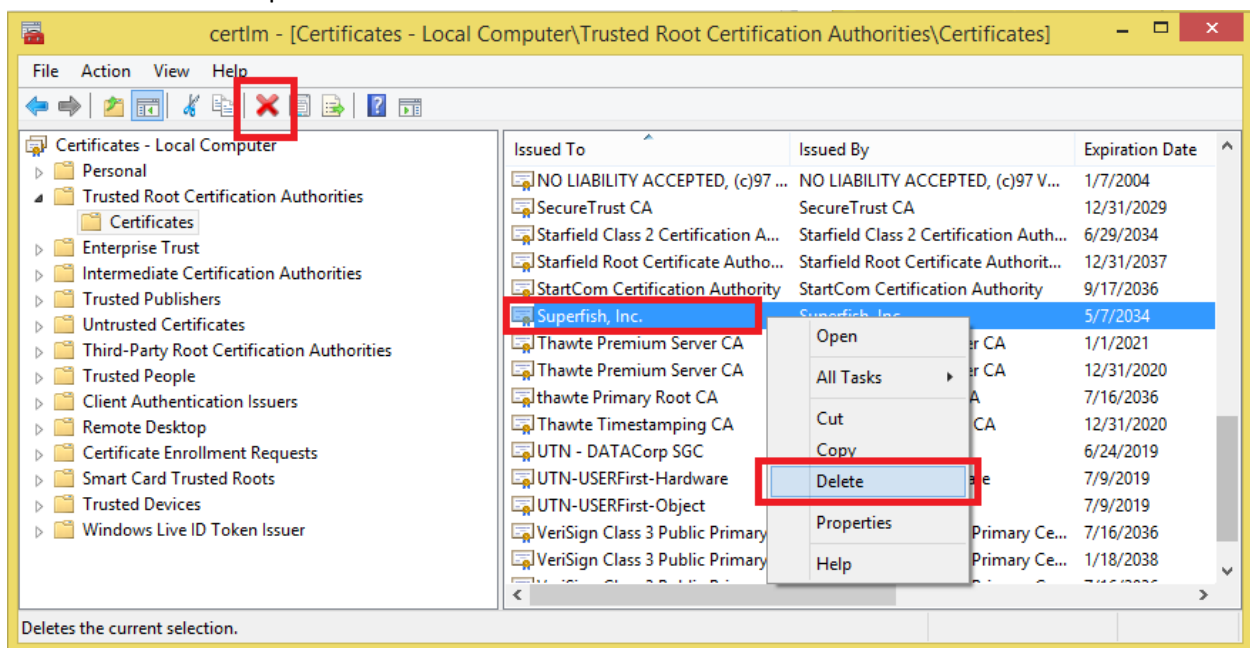
**Step 3:** When prompted by Windows, “Do you want to allow this program to make changes to this computer?”, select ‘Yes’

**Step 4:** The certificate manager window should appear. On the left hand panel, select “Trusted Root Certificate Authorities” followed by the sub-folder “Certificates”. On the right panel, find the item with the name “Superfish, Inc.”.

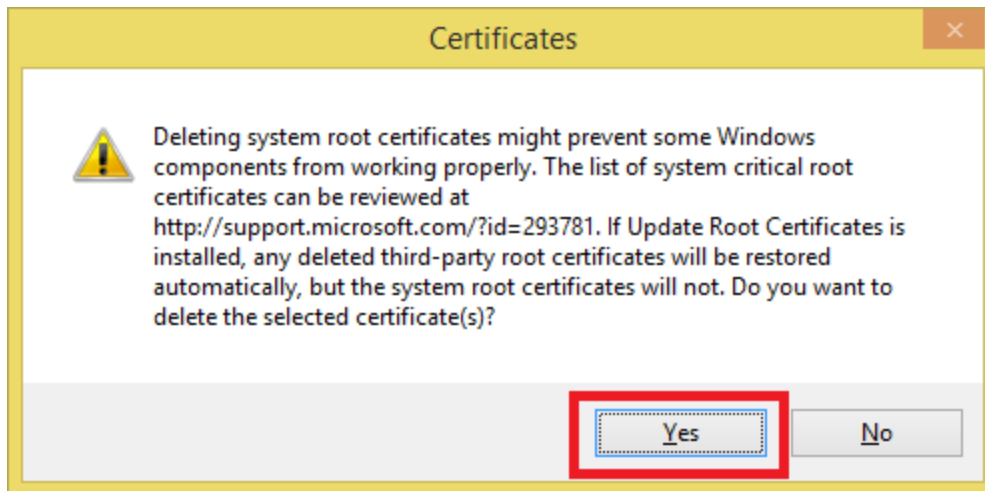
**Note:** If you do not find an item with the name “SuperFish Inc.”, you do not have the certificate installed.



**Step 5.** Right click on the item labeled “**Superfish, Inc.**” and select ‘Delete’. On touch systems, you may select the red ‘X’ in top toolbar.



**Step 6.** When prompted by Windows to confirm the deletion, select **'Yes'**. The certificate should now be removed.



**Step 6.** Restart your device.